



ENIGMA CLASSIC SOFTWARE

Download, Install, Program & Retrieve Instructions for Laptop Computers

Enigma Acoustic Data Loggers

Instructions apply to standard loggers and hydrophone loggers



SUBSURFACE INSTRUMENTS, INC.

WWW.SSILOCATORS.COM
INFO@SSILOCATORS.COM
(920) 347.1788

DOWNLOADING ENIGMA CLASSIC SOFTWARE

Go to <https://www.ssilocators.com/product/enigma-loggers/> to download the latest software.

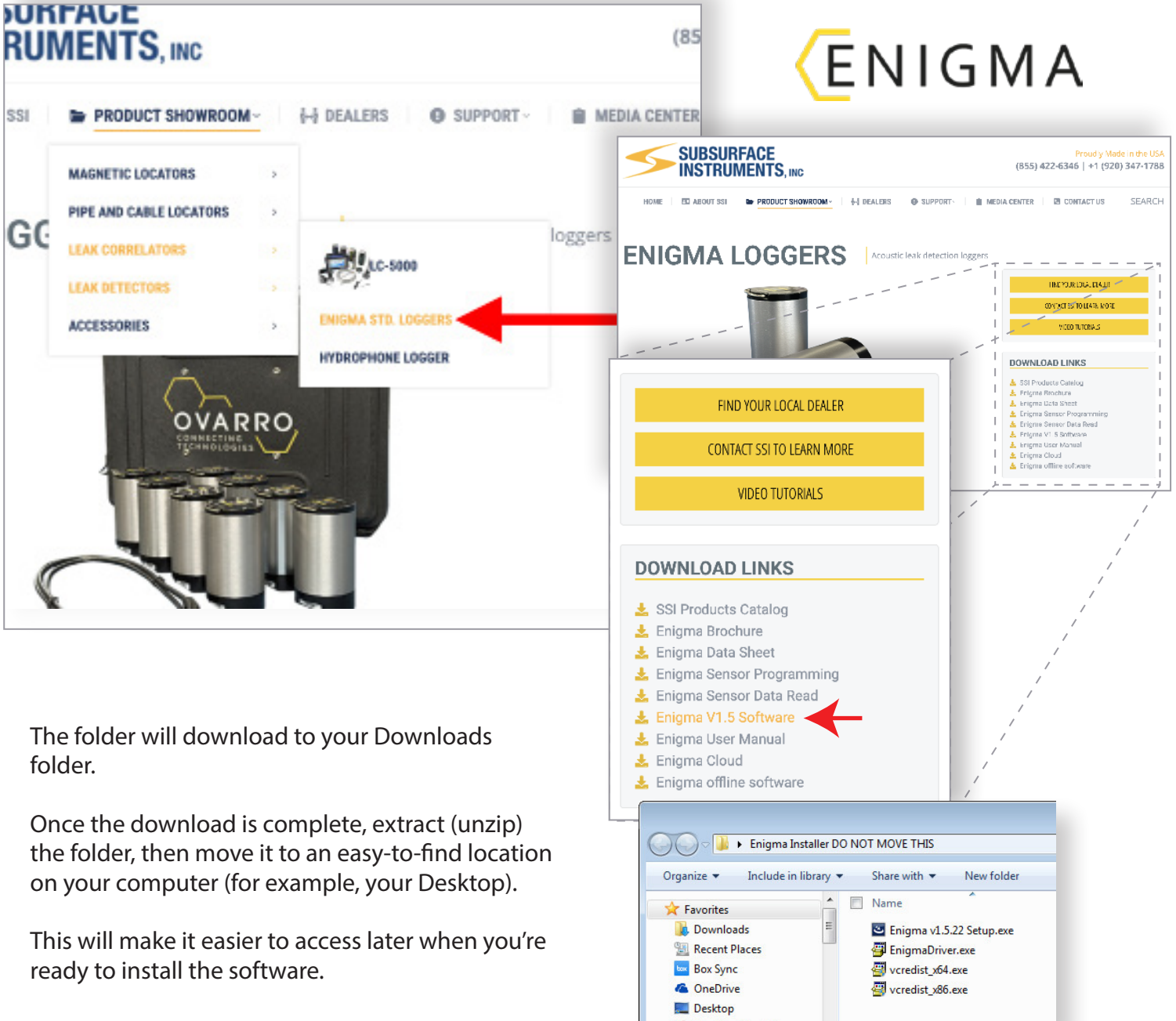
Go to the **“PRODUCT SHOWROOM”** section of the website.

From there, select the category **“LEAK CORRELATORS.”**

Once inside, click on **“Enigma Loggers.”**

On the Enigma Loggers page, look to the right-hand side and locate the **“DOWNLOAD LINKS”** tab.

From this section, download Enigma **V1.5 Software** to your computer.

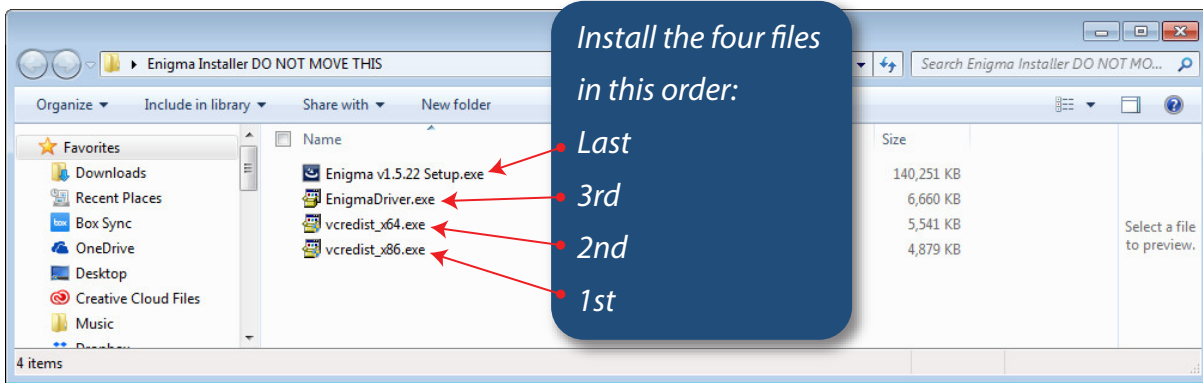


The folder will download to your Downloads folder.

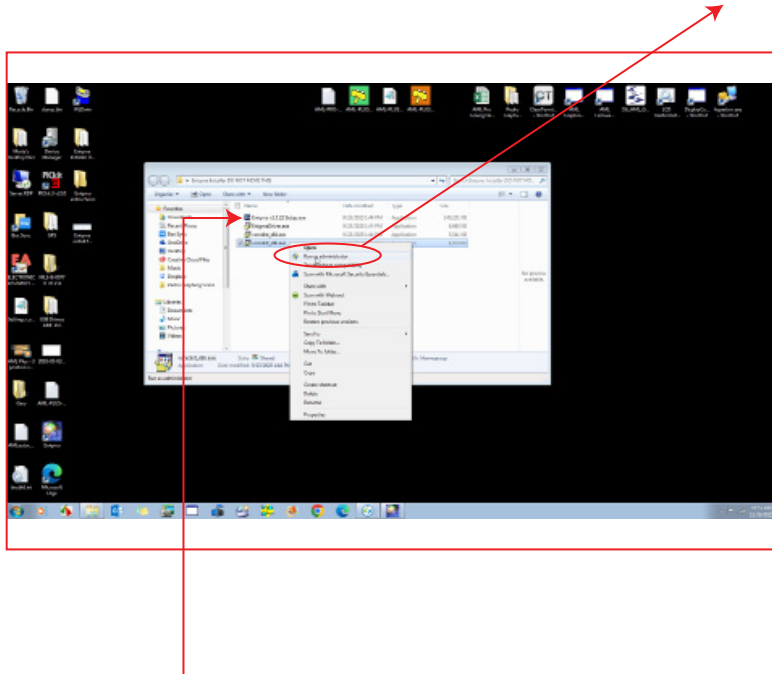
Once the download is complete, extract (unzip) the folder, then move it to an easy-to-find location on your computer (for example, your Desktop).

This will make it easier to access later when you're ready to install the software.

Follow the steps in the exact order explained on this Guide to ensure correct installation



Make sure you install the four apps with this option: **“Run as Administrator”** By right-clicking on top of the file.

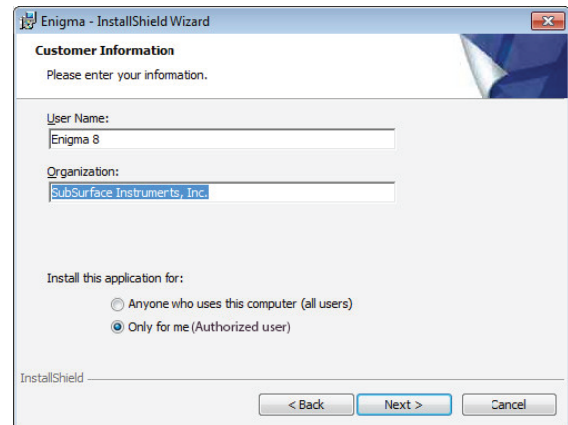


IMPORTANT NOTE:

When you're ready to install Enigma V1.5, follow the on-screen instructions.

Make sure you install the app using your authorized administrator-level user.

That user must have full permission to install and modify files, or the software will not install correctly.



Troubleshooting Issues with the Software

15 January 2026

Windows 11 **FIX**

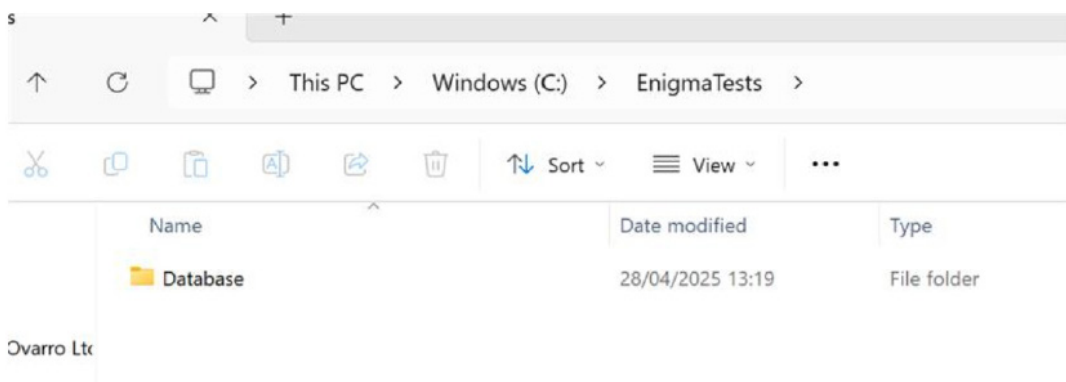
Known Issue: Customers using Windows 11 may experience an issue where the software closes immediately after clicking the Enigma icon, preventing it from launching properly. Please follow the steps below to resolve this issue.

The following guide outlines the steps needed to change the configuration file to stop the Enigma Software from using OneDrive

1. Create a folder on the C: called 'Enigma Tests' so the path will be C:\EnigmaTests
2. Navigate to the Enigma software Configuration file location C:\ProgramData\Primayer\Enigma
3. Create a backup of the Configuration file and put it to one side Configuration.xml
4. Open Notepad as Administrator and open the Configuration.xml file
5. Change all the Database and Read back directory paths in that XML file to: C:\EnigmaTests
6. It should now look like this

```
<Enumerator>None</Enumerator>
</DatabaseLabels>
<EnigmaConfiguration ReportCNValues="false">
  <RootDatabaseDirectory>C:\EnigmaTests\Database</RootDatabaseDirectory>
  <RootReadbackDirectory>C:\EnigmaTests\ReadbackData</RootReadbackDirectory>
  <CSSFile>Enigma.css</CSSFile>
  <DefaultDatabaseDirectory>C:\EnigmaTests\Database</DefaultDatabaseDirectory>
  <DefaultReadbackDirectory>C:\EnigmaTests\ReadbackData</DefaultReadbackDirectory>
  <TimeDelay>1500</TimeDelay>
  <DefaultPipeMaterial />
  <DefaultPipeDiameter />
  <DefaultPipeLength />
```

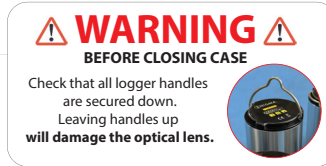
7. Save the file and close the editor
8. Run the Enigma classic software again "As Administrator."
9. Using administrator privilege will ensure the Application has full read/write access to the newly created folder
10. The document contains confidential and proprietary information of Ovarro LD Limited and must be kept strictly confidential. It may not be disclosed in whole or in part under any circumstances without the express prior written consent of Ovarro LD Limited.
11. If you check the C:\EnigmaTests folder, you will notice a new folder structure has been automatically created inside of it.



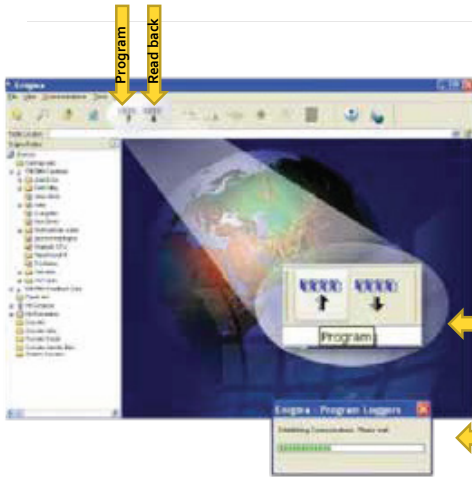
From the PC run the **Enigma** software by clicking on the desktop icon or program menu.



9 November 2020



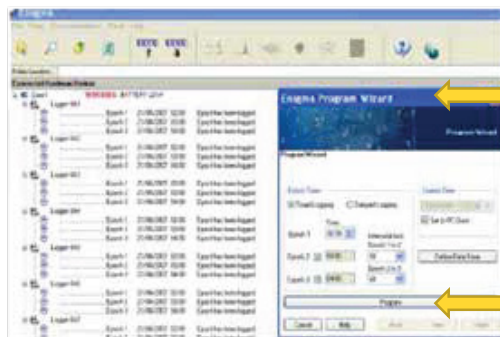
The **Enigma** case lid must be closed when Programming or Reading back loggers.



1. These two buttons are the logger **PROGRAM** and **READ BACK**

2. Ensure the USB communications cable is connected.

3. Click on the **PROGRAM** button which will produce the following progress box.

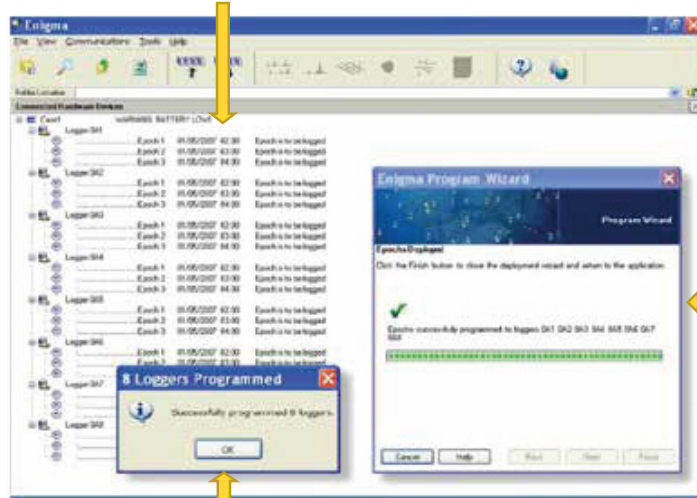


4. The Programming Wizard will appear and is usually set for the default use of Timed Logging (overnight) as shown. The settings shown are those recommended by SSI and used by many users.

5. Click on Program.

6. The Screen should indicate that it has found all the loggers in the case and give any relevant warnings.

7. The status screen indicates that the loggers are waiting to record leak noise data.



8. The Programming wizard indicates the loggers it has found and successfully programmed.

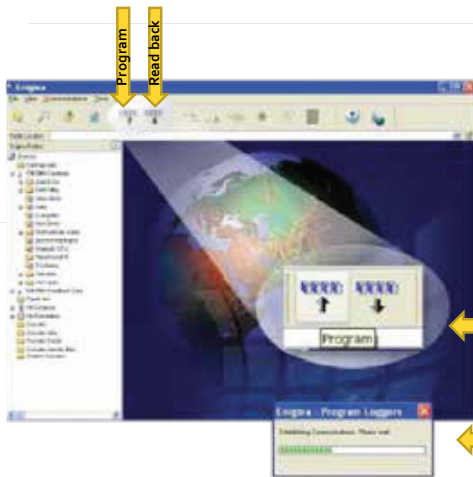
9. The loggers have been successfully programmed and are ready for deployment.



From the PC run the **Enigma** software by clicking on the desktop Icon or program menu.




9 November 2020



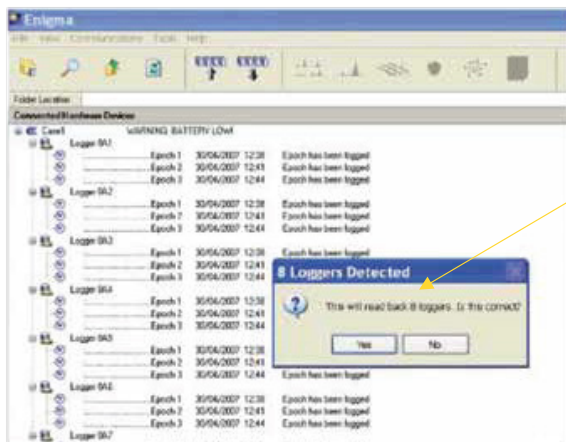
WARNING
BEFORE CLOSING CASE

Check that all logger handles are secured down. Leaving handles up will damage the optical lens.



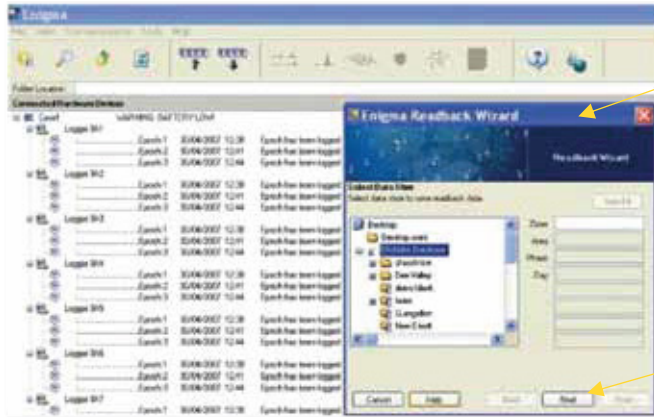
The **Enigma** case lid must be closed when Programming or Reading back loggers.

1. These two buttons are the logger **PROGRAM** and **READ BACK**
2. Ensure the USB communications cable is connected.
3. Click on the **READ BACK** button which will produce the following progress box.



4. The status window indicates how many loggers have been found in the case and asks for confirmation before progressing to the **Enigma** Readback wizard shown overleaf

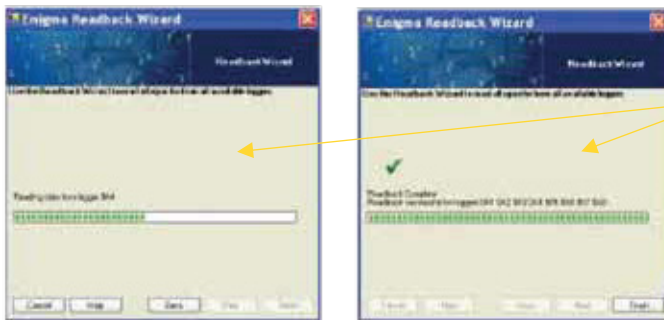




5. The Readback wizard indicates the location it is going to store the data in the ENIGMA Database. It will ask for a Location name or 'Zone'. This can be a DMA reference number or name, etc

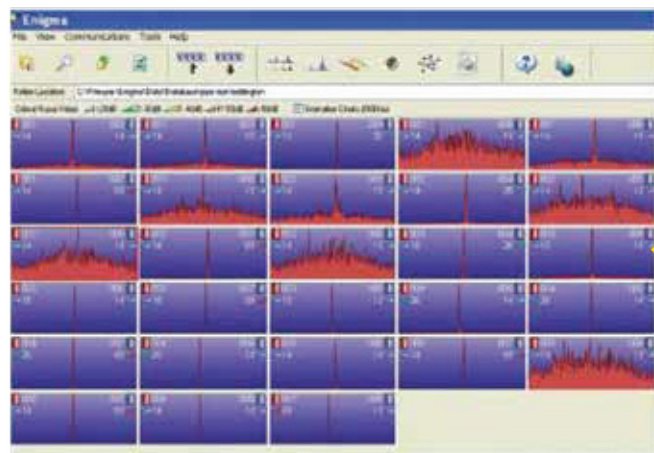
It is possible to enter Zone – Area – Phase, etc. The minimum entry is the Zone field

6. After entering a Zone name, etc (above) click on the Next button



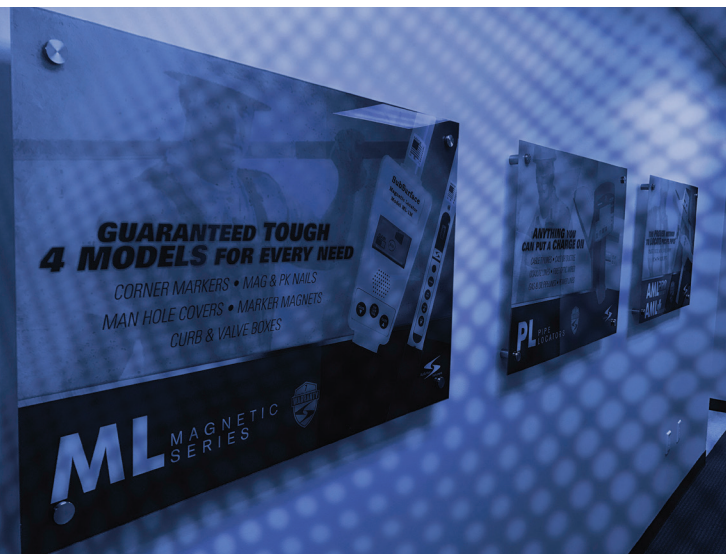
7. These dialogue/progress boxes appear.

Then the dialogue box below



8. The leak noise data may now be analysed





AN INNOVATIVE DESIGN FORCE IN SUBSURFACE DETECTION & LOCATION

SubSurface Instruments, Inc. is an innovating force that engineers, manufactures and distributes high-frequency and magnetic locators, pipe and cable locators, leak detectors, leak correlators, borehole gradiometers, pipe inspection cameras, ground fault locators and specialty locators.

SubSurface Instruments, Inc. is a U.S.-based manufacturer specializing in advanced utility locating and leak detection equipment. With decades of experience in the field, we design and build tools that help municipalities, contractors, and utilities locate underground assets with precision and reliability. Our products are trusted worldwide for their durability, accuracy, and ease of use, whether it's for locating pipes and cables, detecting water leaks, or mapping critical infrastructure.

What sets SubSurface Instruments apart is our commitment to innovation, customer service, and real-world performance. Every product we offer is engineered, tested, and supported by a dedicated team that understands the challenges of working in the field. We pride ourselves on being responsive to customer needs, offering dependable service, and continually developing solutions that make locating and leak detection simpler, faster, and more effective.



Scan to go to our Website

SubSurface Instruments, Inc.

1230 Flight Way Drive

De Pere, WI 54115 USA

855.422.6346 toll free

+1 (920) 347.1788

info@ssilocators.com

www.ssilocators.com

