

LD-12

Operation Manual



SubSurface

Instruments

TABLE OF CONTENTS

Section

Section I. Sensor Damage and Personal Safety Precautions	1-1
Section II. Components, Standard Accessories & Optional Accessories	2-1
Section III. Specific Operating Instructions	3-1
Assembly and Set-up	3-1
Battery Power and Battery Check	3-2
Hand Switch and Mute Button	3-3
Volume Control	3-3
Amplifier Meter Display	3-3
High and Low Frequency Filters	3-4
LIGHT Switch for Meter and Filters	3-5
Limiter Switch (Amplifier Side)	3-5
Filter-Thru Switch (Amplifier Side)	3-6
Ground Microphone Base for Streets	3-7
Magnet Base for Hydrants and Valves	3-7
Contact Rod for Soil and Brass Valves	3-8
Section IV. General Strategies for Water Leak Detection	4-1
Types of Water Leak Sounds	4-1
Factors Affecting Leak Sounds	4-1
Sound Transmission Through Pipe Walls	4-4
Water Leak Surveys	4-5
Water Leak Pinpointing	4-6
Filtering Out Extraneous Noises	4-8
Section V. Specifications	5-1
Section VI. Warranty Statement	6-1
Returns for Repair and Replacement Parts	6-1

LIST OF FIGURES

Figure	Title	Page
3-1	Amplifier Connectors & Controls	3-1
3-2	LD-12 with Ground Microphone	3-3
3-3	Listening Ranges for Combinations of Filters	3-4
3-4	Limiter and Filter-Thru Switches	3-6
3-5	Ground Microphone for Streets	3-7
3-6	Magnet Base for Hydrants & Valves	3-7
4-1	Sound Intensity vs. Water Pressure Graph	4-2
4-2	Filtered Frequencies Graphs	4-2
4-3	Absorption of Sound Frequencies by Soil	4-3
4-4	Sound Attenuation of Different Frequencies by 4 feet of Soil	4-4
4-5	Sound Transmission vs. Distance from Leak	4-4
4-6	Leak Survey at a Hydrant	4-6
4-7	Water Leak Pinpointing	4-7
4-8	Leak Survey at a Meter	4-8
4-9	Leak Pinpointing Over a Hydrant Line	4-9

Section I

Sensor Damage and Personal Safety Precautions

WARNING!

The LD-12 can damage human hearing if it is used improperly. Always follow these procedures for safe use:

1. Turn the amplifier volume down to twenty-five percent (25%) or less before putting on the headphones.
2. Position the ground microphone (or sensor with magnet base) firmly on the street or other listening surface before depressing the mute switch.
3. Keep the ground microphone (or sensor with magnet base) and the cable wires completely stationary whenever the mute switch is depressed.
4. Turn up the amplifier volume to higher levels only when everything is stationary and the mute switch is depressed.
5. Release the mute switch before moving the ground microphone (or sensor with magnet base) or before attaching hydrant wrenches, valve keys, or other tools to the piping system.

WARNING!

The LD-12 sensor inside the ground microphone is a ceramic piezo-electric element. It can be broken if it is dropped onto concrete or other hard surfaces from only 18 to 24 inches or if it is physically shocked in some other way. If the piezo-electric element is broken due to harsh treatment, it must be replaced at the owner's expense, and it will not be covered under the LD-12's warranty. The LD-12 sensor is covered under the LD-12's warranty against manufacturing defects and against failures during ordinary use and handling.

Section II

Components, Standard Accessories & Optional Accessories

The LD-12 consists of the following component items and standard accessories:

1. Ground microphone and handswitch (mute) with three (3) pronged base and forty (40) inch long sensor cable
2. Amplifier with power switch, volume control, meter display of sound intensity (and battery power), adjustable low and high frequency filters, Limiter switch, Filter-Thru switch, and Lights switch.
3. Stereo headphones
4. Magnet base accessory
5. Three (3) section contact rod accessory
6. Ten millimeter (10mm) nutdriver for removing the base of the ground microphone
7. Durable, water-tight carrying case with custom foam interior
8. Shoulder (or neck) strap for the amplifier
9. Padded carrying case for the amplifier
10. Instruction manual

Two optional accessories available for the LD-12 are:

1. Ground microphone with three (3) pronged base, handswitch, and six (6) foot long sensor cable
2. Ground microphone with three (3) pronged base, handswitch, and ten (10) foot long sensor cable

The longer sensor cables are used for lowering the sensor with the magnet base down onto deep valves in water lines that are 5 to 10 feet deep.

Note: The sensor and cables are waterproof, allowing them to be lowered onto a valve which is underwater.

Section III.

Specific Operating Instructions

Assembly and Set-up

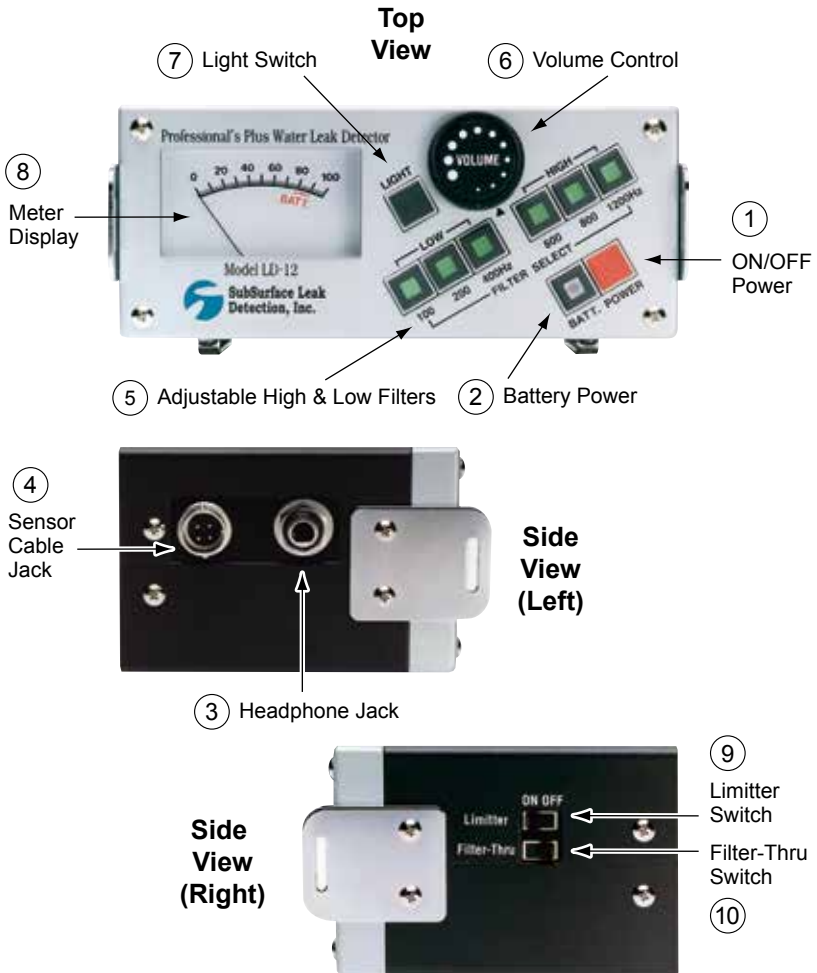


Figure 3-1 Amplifier Connectors and Controls

Figure 3-1 shows the amplifier:

1. ON/OFF power switch
2. Battery power check switch
3. Headphones jack receptacle
4. Sensor cable “jack” connector
5. Adjustable high and low filters
6. Volume control
7. Light switch (meter and filters)
8. Meter display
9. Limiter switch
10. Filter-Thru switch

Attach the sensor cable connector to the amplifier’s sensor cable jack. Note: The connector and jack are “polarized”, mating together in only one orientation.

Install the headphones plug connector into the headphones jack receptacle on the amplifier. Note: the headphones jack receptacle is power “switched”, such that the headphones must be attached in order for the amplifier’s power to turn ON. If the headphones are not attached to the amplifier, the power will not turn ON.

Battery Power and Battery Check

With the amplifier’s power ON, the user can check the condition of the batteries. Depress the BATT switch and observe the amplifier’s meter deflection. The batteries are still good if the meter needle deflects into the red line labeled BATT. If the needle falls below the red line, replace all six of the batteries soon.

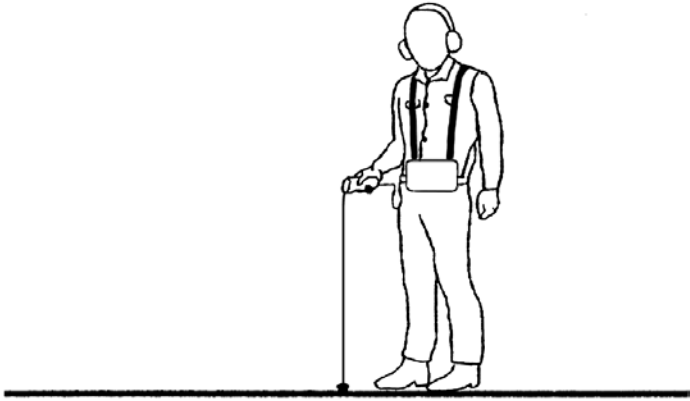


Figure 3-2 LD-12 with Ground Microphone

Hand Switch and Mute Button

Figure 3-2 shows the completely assembled LD-12 with the ground microphone positioned firmly on the street's surface directly over the water line. The mute button in the handswitch shown in the user's hand is depressed only when the ground microphone and cables are completely stationary and the user is ready to hear the leak. Sound will not be heard until the mute switch button is depressed. The mute switch button must be released before moving the ground microphone in order to protect the user's hearing. The mute switch is specifically designed for this purpose.

Volume Control

Figure 3-1 shows the volume control knob on the amplifier. Turn the volume control knob clockwise to increase the sound level. Turn the volume control knob counter-clockwise to decrease the sound level. Always adjust the volume control to a low level (10% to 25%) when first putting on the headphones and before depressing the mute switch. Increase the volume gradually until the water leak sounds can be heard easily but without distortion. Reduce the volume if there is distortion of the sound.

Amplifier Meter Display

Figure 3-1 shows the amplifier's meter display of the sound's intensity. The meter's display of the intensity corresponds to the sound's loudness in the headphones: a low display for quiet, soft sounds and a high display for loud sounds. The purpose of the meter display is to assist the user when comparing the sound's intensity when the user's hearing has difficulty distinguishing which

location (on the street, at the meters, etc.) is louder. Often the meter can distinguish which location is louder when the user’s hearing can not tell.

High and Low Frequency Filters

Figure 3-1 shows the three (3) low frequency filter switches and the three (3) high frequency filter switches. The three (3) low frequency filters are set at 100 Hz, 200 Hz and 400 Hz. If the 100 Hz filter switch is depressed, then all noises and sounds at 100 Hz frequency and lower are filtered out. If the 200 Hz filter or 400 Hz filter switches are selected, then all noises and sounds at these frequencies and lower are filtered out. The three (3) high frequency filters are set at 600 Hz, 800 Hz and 1200 Hz. If the 1200 Hz filter switch is depressed, then all noises and sounds at 1200 Hz frequency and higher are filtered out. If the 800 Hz filter or 600 Hz filter switches are selected, then all noises and sounds at these frequencies and higher are filtered out.

Usually the 100 Hz low frequency filter and the 1200 Hz high frequency filter are selected initially until specific extraneous noises, such as traffic, wind, etc., are identified audibly by the user. The six (6) low and high frequency filters combine to allow 9 different listening ranges as shown below in Figure 3-3.

LOW			HIGH			Leak Noise Listening Range
100	200	400	600	800	1200	
<input checked="" type="checkbox"/>	<input type="checkbox"/>	<input type="checkbox"/>	<input checked="" type="checkbox"/>	<input type="checkbox"/>	<input type="checkbox"/>	100 Hz to 600 Hz
<input checked="" type="checkbox"/>	<input type="checkbox"/>	<input type="checkbox"/>	<input type="checkbox"/>	<input checked="" type="checkbox"/>	<input type="checkbox"/>	100 Hz to 800 Hz
<input checked="" type="checkbox"/>	<input type="checkbox"/>	<input type="checkbox"/>	<input type="checkbox"/>	<input type="checkbox"/>	<input checked="" type="checkbox"/>	100 Hz to 1200 Hz
<input type="checkbox"/>	<input checked="" type="checkbox"/>	<input type="checkbox"/>	<input checked="" type="checkbox"/>	<input type="checkbox"/>	<input type="checkbox"/>	200 Hz to 600 Hz
<input type="checkbox"/>	<input checked="" type="checkbox"/>	<input type="checkbox"/>	<input type="checkbox"/>	<input checked="" type="checkbox"/>	<input type="checkbox"/>	200 Hz to 800 Hz
<input type="checkbox"/>	<input checked="" type="checkbox"/>	<input type="checkbox"/>	<input type="checkbox"/>	<input type="checkbox"/>	<input checked="" type="checkbox"/>	200 Hz to 1200 Hz
<input type="checkbox"/>	<input type="checkbox"/>	<input checked="" type="checkbox"/>	<input checked="" type="checkbox"/>	<input type="checkbox"/>	<input type="checkbox"/>	400 Hz to 600 Hz
<input type="checkbox"/>	<input type="checkbox"/>	<input checked="" type="checkbox"/>	<input type="checkbox"/>	<input checked="" type="checkbox"/>	<input type="checkbox"/>	400 Hz to 800 Hz
<input type="checkbox"/>	<input type="checkbox"/>	<input checked="" type="checkbox"/>	<input type="checkbox"/>	<input type="checkbox"/>	<input checked="" type="checkbox"/>	400 Hz to 1200 Hz

Figure 3-3 Listening Ranges for Combinations of Filters

The low frequency filter and the high frequency filter can often be used to eliminate many extraneous noises such as traffic and wind.

LIGHT Switch for Meter and Filters

Figure 3-1 shows the LIGHT switch located on the amplifier's face between the volume control knob and the meter. The LIGHT switch allows the user to turn ON or OFF the meter backlight and the light switches for the filters.

If the LIGHT switch is turned OFF, the meter and the filter switches operate normally, but their power consumptions are greatly reduced. By operating the amplifier with the LIGHT switch turned OFF, the battery lives are doubled.

Limiter Switch (Amplifier Right Side)

Figure 3-4 shows a side view of the amplifier with the Limiter switch in the ON position. The Limiter switch can be turned ON or OFF by the user at any time. In the ON position, the Limiter stops any sound louder than 110 dB from passing through to the headphones. The user can use the Limiter to fully protect his or her hearing.

Sometimes, the user may wish to listen to the sounds of a leak at a very loud volume, even greater than 110 dB. In this case, the user should turn OFF the Limiter in order that it does not interfere with the clarity of the loud sounds.



Figure 3-4 Limiter and Filter-Thru Switches

Filter-Thru Switch (Amplifier Right Side)

Figure 3-4 shows a side view of the amplifier with the Filter-Thru switch in the OFF position. When the Filter-Thru switch is turned ON, the filter switches on the face of the amplifier are completely by-passed, and there is no filtering of sounds at all. The user hears all sounds from 50 Hz to 15,000 Hz (or to the extent of his or her hearing).

The amplifier's filters are most useful during "ground miking", when extraneous noises from wind, traffic, equipment, etc. interfere the most with the user's ability to distinguish the leak sounds. Often these extraneous noises are not troubling interferences during leak surveys at hydrants, meters, and valves. At these locations, the leak sounds are easily heard, and often the user will wish to do leak surveys with the Filter-Thru switch turned ON (to hear the clearest, un-filtered sounds).

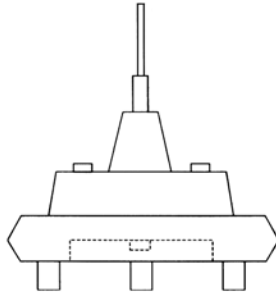


Figure 3-5 Ground Microphone for Streets

Ground Microphone Base for Streets

Figure 3-5 shows a side view of the ground microphone with the three (3) pronged base for listening on streets, pavement surfaces, or concrete slabs. The 3 prongs should rest firmly on the street's hard surface in order for sound to be transmitted clearly to the ground microphone's sensor.

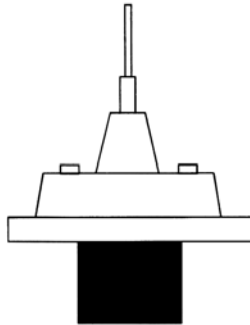


Figure 3-6 Magnet Base for Hydrants and Valves

Magnet Base for Hydrants and Valves

Figure 3-6 shows the magnet base attached to the ground microphone without the 3- pronged base. To remove the 3-pronged base, simply unscrew the base from the sensor. The magnet base should only be hand-tightened onto the brass screw thread of the sensor. It should not be left loosely attached since this will create movement and slight noises.

With the magnet base attached, the user can attach the sensor to cast iron fire hydrants, iron water mains, iron valves, or steel water pipes and fittings. This will enable the user to hear the sounds being transmitted through the piping.

Contact Rod for Soil and Brass Valves

The contact rod is provided to assist in contacting the sensor to materials that are soft, spongy, porous, or non-ferrous. To use, remove the nut on the base of the ground microphone with the nutdriver and attach the contact rod to the brass thread. If only a short rod is needed, attach only the pointed section of the contact rod to the bottom of the sensor. For deep brass valves at curb stops, use all three (3) sections of the contact rod, and push the point of the contact rod firmly against the brass valve. For water leak searches in areas covered by loose soil or grass cover over the water line, use only the pointed bottom section of the contact rod.

In either application, do not try to hold the sensor or the contact rod with your hand, since this will cause small movements and "crackling" sounds at the point of contact of the rod. Let the sensor or the contact rod rest against the curb box wall or the meter box wall. For water leak searches in areas covered by loose soil or grass, push the pointed contact rod firmly into the dirt two to six inches, but do not hammer it into the ground or try to force it in deeply. It only needs to make firm contact in the ground.

WARNING!

The sensor and the contact rod are not a digging tool, boring bar, or other heavy tool. Use these other tools for pushing through the soil or digging holes, and do not risk damaging the ceramic element inside the sensor by using the contact rod in this manner.

Section IV

General Strategies for Water Leak Detection

Types of Water Leak Sounds

There are three different, commonly identified sounds produced by water leaks:

1. Pipe resonance and vibration from orifice pressure reduction.
2. Water impaction on the surrounding soil.
3. Water circulation and flow in the surrounding soil cavity.

Resonance or pipe vibration is often the loudest or most intense leak noise, sounding like a "whoosh" or a "hiss." Water impaction and circulation are often weaker, and often they may only be heard when the LD-12 user is very close to the leak or directly over it. Water impacting directly on the soil is a "beating" or a rapid "thumping" sound, and water flowing into the soil and around the pipe sounds like a "babbling brook" or a mountain stream. If the leak has created a very large cavity in the soil, these second and third sounds may not be heard at all.

Factors Affecting Leak Sounds

There are several factors that affect the loudness and the frequency range of sounds made by water leaks in water pipes and transmitted to the surface of the ground. These factors are:

1. Water pressure in the pipe (must be 25 psi or more)*
2. Pipe material and pipe diameter
3. Soil type and soil compaction
4. Depth of soil over the pipe
5. Surface cover: grass, loose soil, asphalt, concrete slab, etc.

* Pressuring to 50-60 psi or more will greatly aide detection. The intensity or loudness of water leak sounds increases greatly with increasing water pressure (see Figure 4-1).

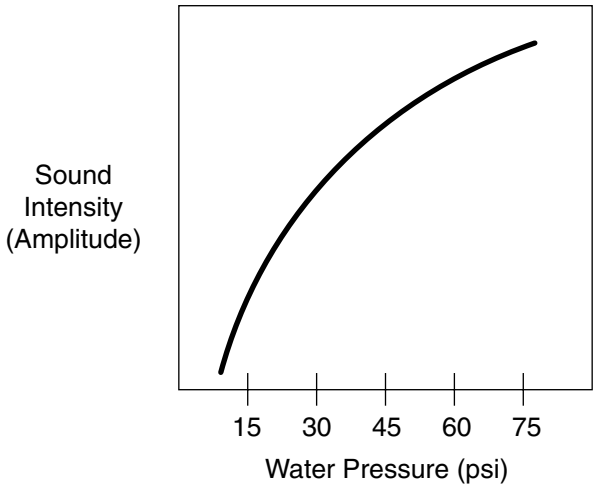


Figure 4-1 Sound Intensity vs. Water Pressure Graph

Metal pipes, such as iron mains, copper services, and steel pipes, transmit water leak sounds that are louder and higher in frequency than do PVC pipes or asbestos-cement pipes. Thus, knowledge of the pipe material is important (see Figure 4-2).

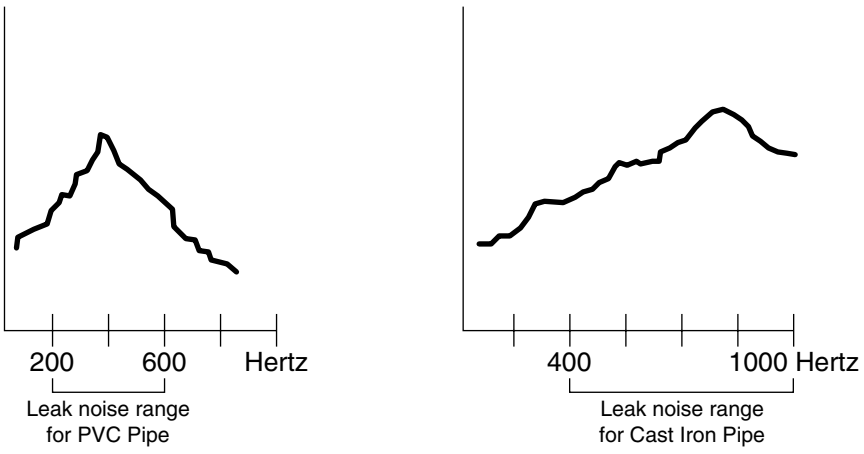


Figure 4-2 Filtered Frequencies Graphs

If the LD-12 user knows that the leak is small, with pressure of 60 psi or more, and in an iron main or copper service, then the user knows the sounds should be in a high frequency range, perhaps 400 Hz to 1200 Hz. If the LD-12 user knows that the leak is large, with a pressure of only 30 to 40 psi, and in a PVC pipe, then the user knows the sounds should be in a lower frequency range, perhaps 200 Hz to 600 Hz.

Large diameter pipes, whether they are PVC, concrete, steel, or iron, transmit much less sound from water leaks and produce lower frequency sounds than small diameter pipes. Because of their mechanical properties, large diameter iron and steel pipes, such as 24 inches diameter and greater, resonate with much lower frequency leak sounds than the smaller diameter iron and steel pipes, such as 6 inches and 8 inches. Extremely large concrete and steel pipes, such as 96 inches or more, make very little "orifice pressure reduction" sound at their water leaks.

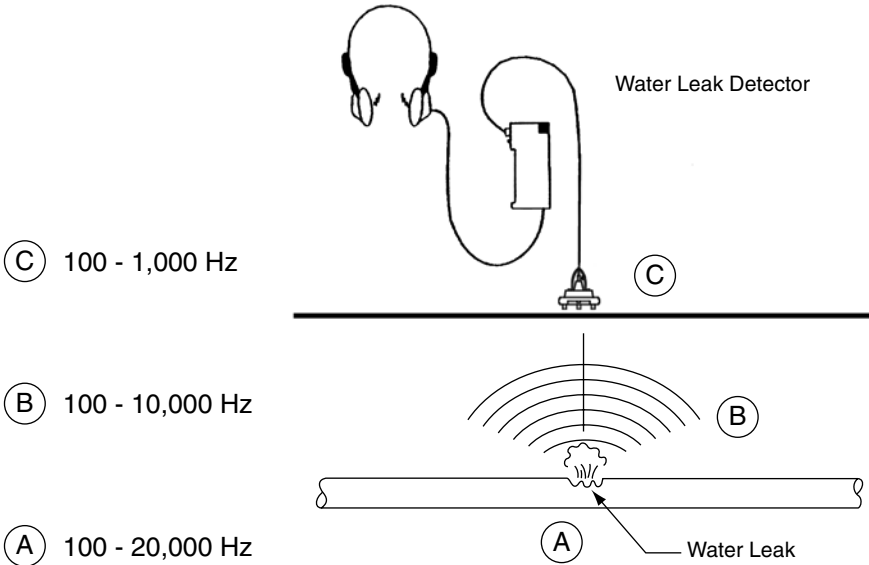


Figure 4-3 Absorption of Sound Frequencies by Soil

Sandy soil and very loose soils, particularly over a freshly buried pipe line, do not transmit the sounds of water leaks very well, nor do water saturated soils such as bogs and swamps. Hard, compacted soil transmits the sounds of water leaks best. Soil absorbs the sounds of water leaks very quickly, and it is very difficult to hear the sounds of water leaks from lines deeper than 7 or 8 feet. Leaks in water lines that are only 3 or 4 feet deep are much easier to hear at the ground's surface than leaks in deeper lines. The attenuation of sound in low frequencies in soil is approximately 40 dB for every 3 feet of depth. Also, the higher frequencies of sound are absorbed more quickly in soil than the low frequencies, as shown in Figure 4-3 and Figure 4-4.

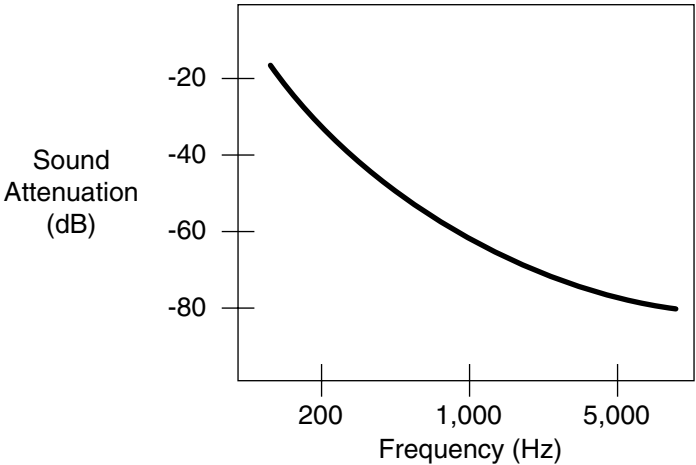


Figure 4-4 Sound Attenuation of Different Frequencies by 4 feet of Soil

Finally, the ground cover, whether it is an asphalt street, loose dirt, concrete slab, or grass lawn, also makes an important difference. Hard street surfaces and concrete slabs resonate with the sounds of the water leak, and the leak may be heard for 5 to 10 feet or more on either side of the water pipe. Grass lawns and loose dirt surfaces do not offer such a resonating plate-like surface.

Sound Transmission Through Pipe Walls

Metal pipes, particularly iron mains between 6 inches and 12 inches, copper services, and steel pipes, transmit the sounds of water leaks for hundreds of feet in every direction. Asbestos-cement pipe and PVC pipe do not transmit the sounds nearly as far, and the sounds of leaks in these materials may be transmitted only 100 to 400 feet (see Figure 4-5).

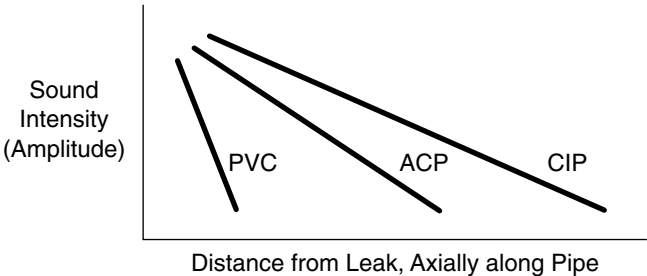


Figure 4-5 Sound Transmission vs. Distance from Leak

Distances transmitted for the sounds of water leaks are a function of the pipe diameter as well as the pipe material (see table below).

<u>Pipe Material and Diameter</u>	<u>Typical Max. Distance for Transmission of Leak Sounds</u>
6 inch Cast Iron Pipe	600 to 1000 feet
12 inch Cast Iron Pipe	400 to 800 feet
24 inch Cast Iron Pipe	200 to 400 feet
6 inch AC Pipe	400 to 800 feet
12 inch AC Pipe	300 to 500 feet
24 inch AC Pipe	100 to 300 feet
6 inch PVC Pipe	200 to 300 feet
12 inch PVC Pipe	100 to 200 feet
24 inch PVC Pipe	50 to 100 feet

Thus knowledge of the pipe material and diameter is important to knowing how far the sounds of a leak may be transmitted along the pipe walls. If the leak is in a 6 inch cast iron water line, the LD-12 user will listen first at the hydrants and main valves. If the LD-12 user hears nothing at the first location, he moves 500 to 600 feet to another hydrant or main valve. If the leak is in a 24 inch PVC pipe however, the LD-12 user cannot simply listen at only hydrants and main valves and be assured that there are no leaks within 500 to 600 feet. In this case, the LD-12 user must check at every possible curb stop and valve, or the user may even "ground mike" the entire length of the 24 inch PVC pipe.

Water Leak Surveys

If there is no obvious evidence of a major water leak, like water surfacing or very loud leak sounds at the hydrants, but the area is experiencing abnormally large water losses, then a "water leak survey" may be needed. The water leak survey is usually done with only the magnet base attached to the sensor, and it initially is conducted only at the hydrants and the main valves (see Figure 4-6).



Figure 4-6 Leak Survey at a Hydrant

As previously discussed, knowledge of the pipe material and pipe diameter is important in order to know whether a thorough survey can be performed only by listening at hydrants and valves that are 500 to 600 feet apart.

During the water leak survey, if the sounds of a possible water leak are heard at a hydrant or valve, the LD-12 user then checks at every immediate, nearby lateral valve, hydrant valve, and residential or commercial service line. At the valve or other location where the leak sound is the loudest is where the final leak "pinpointing" usually begins.

Water Leak Pinpointing

The "pinpointed" location refers to the exact spot on the street's surface directly above the water leak. This spot is almost always the location of the maximum intensity or maximum loudness of the leak sounds (see Figure 4-7).

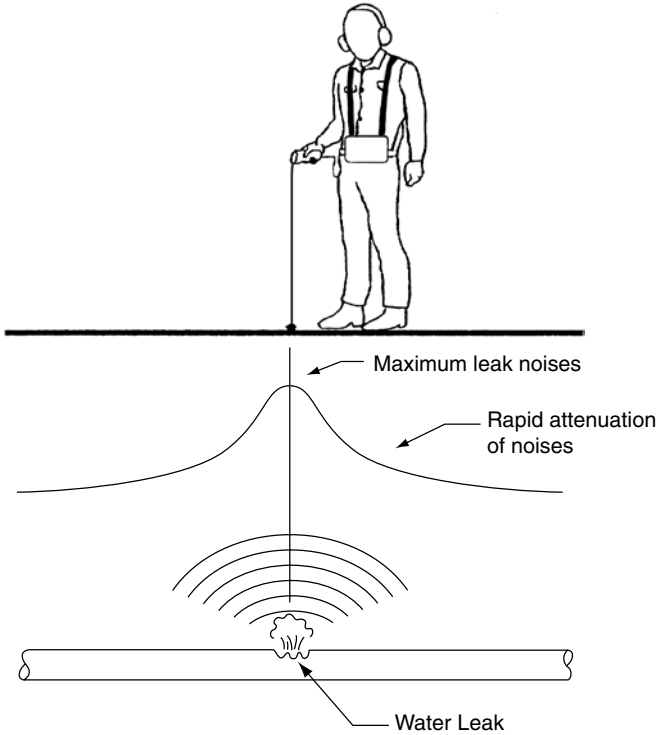


Figure 4-7 Water Leak Pinpointing

To find this spot, the LD-12 user must carefully mark the location of the water line on the street after locating it exactly with a pipe and cable locator. Usually, the piping between the valve or hydrant with the loudest sound and the valve or hydrant with the second loudest sound is the section of the line that needs to be marked. The section must be accurately located and marked on the street in order for the LD-12 user to consistently listen directly over the line.

The LD-12 user listens with the 3-pronged base attached to the ground microphone directly over the line. The LD-12 user moves the ground microphone 3 to 4 feet each time in the direction of the water line, listening and moving closer to the water leak. While the LD-12 user is moving, he does not adjust the volume control, since the volume must be held constant in order to make accurate comparisons. When the LD-12 user is very close to the leak, it may be impossible to decide based upon the user's hearing alone whether the leak is in one spot or is in a spot 3 to 4 feet away. When this occurs, the LD-12 user must study the LD-12 meter display. Usually, the meter's needle will be just slightly higher at one spot than at the other. This is the most important purpose of the meter display, allowing the LD-12 user to accurately pinpoint the leak's location when the user's hearing can not.



Figure 4-8 Leak Survey at a Meter

Filtering Out Extraneous Noises

Often there are extraneous noises at a water leak job site, like traffic, wind, AC hum, etc., that can make leak detection difficult, particularly water leak pinpointing on the street. The 200 Hz filter or the 400 Hz filter may be effective at reducing the interference from these extraneous noises.

Step 15 feet away from the water line to an area of the street pavement identical in surface to that over the water line but without any water lines or other utilities anywhere beneath it. Listen to the extraneous noises with the ground microphone on the street, and if it is windy, block the wind's flow around the sensor cable with your body. Try the 200 Hz filter and listen to whether the extraneous noises are reduced or eliminated; if not, try the 400 Hz filter. If either filter has reduced or eliminated the extraneous noises, use that filter and resume leak pinpointing over the water line.

This method is also very effective when the leak is very small, or very quiet, and the LD-12 user is not even certain that what he hears is the leak. In this situation, move 15 feet away from the water line and listen. If you hear the same sounds as before, then you were not hearing the sounds of a water leak.



Figure 4-9 Leak Pinpointing Over a Hydrant Line

Section V

Specifications

Amplifier

- Input Impedance : 50k ohms
- Output Impedance : 15 ohms
- Amplification : 62 dB +/- 3dB
- Frequency Range : 1) 100Hz to 1200Hz
(13 dB) with Filter-Thru OFF
2) 15Hz to 30,000Hz
(13 dB) with Filter-Thru ON
- Power : 6 AA dry cell batteries
- Power Consumption : 1) 70 mA or less with backlight ON
2) 35 mA or less with backlight OFF
- Battery Life : 1) 28 hours with backlight OFF
(alkaline cells)
2) 14 hours with backlight ON
(alkaline cells)
- Weight : 31 ounces (885 g)
- Size : 6.7" x 2.8" x 4.1"
(170mm x 70mm x 103mm)

ABS Carrying Case

- Weight (full) : 15 lb. (6.81 Kg)
- Size : 18.5" x 14.6" x 7.5"
(470mm x 371mm x 190mm)

Section VI

Warranty Statement

SubSurface Leak Detection, Inc. (SubSurface) warrants each product of its manufacture to be free from defects in material and workmanship subject to the following terms and conditions. The warranty is effective for sixty months after shipment by SubSurface to the original purchaser.

Our obligation under the warranty is limited to servicing or adjusting any product returned to the factory for this purpose and to replace any defective part thereof. Such product must be returned by the original purchaser, transportation charges prepaid, with proof in writing, to our satisfaction, of the defect. If the fault has been caused by misuse or abnormal conditions of operation, repairs will be billed at cost. Prior to repair in this instance, a cost estimate will be submitted. Service or shipping information will be furnished upon notification of the difficulty encountered. Model and serial numbers must be supplied by user. Batteries are specifically excluded under the warranty.

SubSurface shall not be liable for any injury to persons, or property, or for any other special or consequential damages sustained, or expenses incurred by reason of the use of any SubSurface product.

Returns for Repair and Replacement Parts

For Service of Repairs:

Please contact SubSurface Instruments, Inc.

Office: +1 (920) 347.1788

info@ssilocators.com | www.ssilocators.com

1230 Flightway Dr.
De Pere, Wisconsin
United States



LD-12 Professional Water Leak Detection

Experience unparalleled accuracy as our LD-12 identifies the source, allowing you to address issues swiftly and efficiently.

Professional-Grade Performance:

Designed for professionals, our acoustic water leak detection equipment is user-friendly yet packed with advanced features. Tackle leaks in residential, commercial, or industrial settings with ease, ensuring minimal disruption and cost-effective solutions.

Protect Your Property:

Water leaks can wreak havoc on property and finances. Invest in peace of mind with our acoustic detection equipment, designed to find leaks with ease and prevent costly damage. Be proactive in preserving your property's integrity with a tool that detects leaks before they become disasters.

Features That Resonate:

- High-Frequency Sensors for Pinpoint Accuracy
- User-Friendly Interface for Easy Operation
- Portable and Lightweight Design
- Versatile Applications for Various Settings

Don't let leaks go undetected. Elevate your water leak detection game with our Acoustic Water Leak Detection LD-12. Contact us today to explore the future of leak detection and safeguard your investments!

SubSurface Instruments, Inc.

Office: +1 (920) 347.1788
info@ssilocators.com | www.ssilocators.com

1230 Flightway Dr.
De Pere, Wisconsin
United States

